

Typical Features

- ◆ Wide input voltage range 11 : 1
- ◆ Efficiency up to 88%
- ◆ Low no-load power consumption
- ◆ Operating temperature from -40°C to +105°C
- ◆ High isolation voltage 3000VAC (input-output) & 2100VAC (input-case)
- ◆ Input under voltage protection, output over voltage, short circuit, over current and over temp protections
- ◆ Standard 1/4 brick size

ZCD50-110S24W is a high-performance DC-DC modular converter with rated input voltage 110VDC (full range from 14V to 160VDC), regulated single output 24V/50W without minimum load limit. It has the advantage of high isolation voltage, Max operating temperature up to 105°C, with input under-voltage protection, output over-current, over-voltage, over-temperature and short circuit protections, input ON/OFF control, output voltage distal end compensation and output voltage Trim, etc.

Typical Product List

Part No.	Input voltage range (VDC)	Output power (W)	Output voltage (VDC)	Output current (A)	Ripple & Noise (mVp-p)	Full load efficiency (%) Min/Typ.	Remarks
ZCD50-110S24WC	14 - 160	50	24	2.1	240	86/88	Standard Positive Logic
ZCD50-110S24WN							Standard Negative Logic
ZCD50-110S24WC-H							Heatsink Positive Logic
ZCD50-110S24WN-H							Heatsink Negative Logic

Input Specifications

Item	Operating conditions	Min.	Typ.	Max.	Unit
Max input current	Input voltage 14V, full load	--	--	5	A
No load input current	Rated input voltage	--	--	10	mA
Input Inrush voltage (1sec. max.)	The unit could be permanently broken by input over this voltage	-0.7	--	185	VDC
Start-up voltage		--	--	14	
Under voltage protection	With No-load (the over current protection could work in advance at full load)	--	--	12	
ON/OFF Control (CNT)	Positive logic: CNT no connection or connected to 3.5-15V to turn ON, connected to 0-1.2V to turn OFF the converter Negative logic: CNT no connection or connected to 3.5-15V to turn OFF, connected to 0-1.2V to turn ON the converter				Reference voltage -Vin

Output Specifications

Item	Operating conditions	Min.	Typ.	Max.	Unit
Output voltage accuracy	Nominal input voltage, 10% -100% load	--	±0.5	±1.0	%

Line regulation	Full load, input voltage from low to high	--	±0.1	±0.2	
Load regulation	Nominal input voltage, 10%-100% load	--	±0.2	±0.5	
Transient recovery time	25% load step change (step rate 1A/50uS)	--	200	250	uS
Transient response deviation		-5	--	+5	%
Temperature drift coefficient	Full load	-0.02	--	+0.02	%/°C
Ripple & Noise	20M bandwidth, with external capacitor >470μF	--	150	240	mVp-p
Output voltage adjustment (TRIM)		-20	--	+10	%
Output voltage distal end compensation (Sense)		--	--	+5	%
Over temperature protection	Maximum temperature of the metal base	105	115	125	°C
Over voltage protection		125	--	140	%
Over current protection		2.3	--	3.6	A
Short circuit protection		Hiccup, continuous, self-recovery			

General Specifications

Item	Operating conditions		Min.	Typ.	Max.	Unit
Isolation voltage	I/P-O/P	Test 1min, leakage current <3mA	3000	--	--	VAC
	I/P-Case	Test 1min, leakage current <3mA	2100	--	--	VAC
	O/P-Case	Test 1min, leakage current <3mA	500	--	--	VAC
Insulation resistance	I/P-O/P	@ 500VDC	100	--	--	MΩ
Switching frequency			--	220	--	KHz
MTBF	MIL-HDBK-217F @25°C		500	--	--	K hours

Environmental Characteristics

Item	Operating conditions		Min.	Typ.	Max.	Unit
Operating temperature	Refer to the temperature derating graph		-40	--	+105	°C
Storage humidity	No condensing		5	--	95	%RH
Storage temperature			-40	--	+125	°C
Pin soldering temperature	1.5mm from the case, soldering time <1.5S		--	--	+350	
Cooling requirement			EN60068-2-1			
Dry heat requirement			EN60068-2-2			
Damp heat requirement			EN60068-2-30			
Shock and vibration			IEC/EN 61373 C1/Body Mounted Class B			

EMC Performances (110VDC input)

EMI	CE		
		EN50121-3-2	150kHz-500kHz 79dBuV
		EN55016-2-1	500kHz-30MHz 73dBuV

	RE	EN50121-3-2	30MHz-230MHz 40dBuV/m at 10m	
		EN55016-2-1	230MHz-1GHz 47dBuV/m at 10m	
EMS	ESD	IEC/EN61000-4-2/GB/T 17626.2-2006	Contact ±6KV/Air ±8KV	Perf. Criteria A
	RS	IEC/EN61000-4-3/GB/T 17626.3-2006	10V/m	Perf. Criteria A
	EFT	IEC/EN61000-4-4/GB/T 17626.4-2008	±2kV 5/50ns 5kHz	Perf. Criteria A
	Surge	IEC/EN61000-4-5/GB/T 17626.5-2008	Line to line ± 1KV (42Ω, 0.5μF)	Perf. Criteria A
	CS	IEC/EN61000-4-6/GB/T 17626.6-2008	0.15MHz-80MHz 10 Vr.m.s	Perf. Criteria A

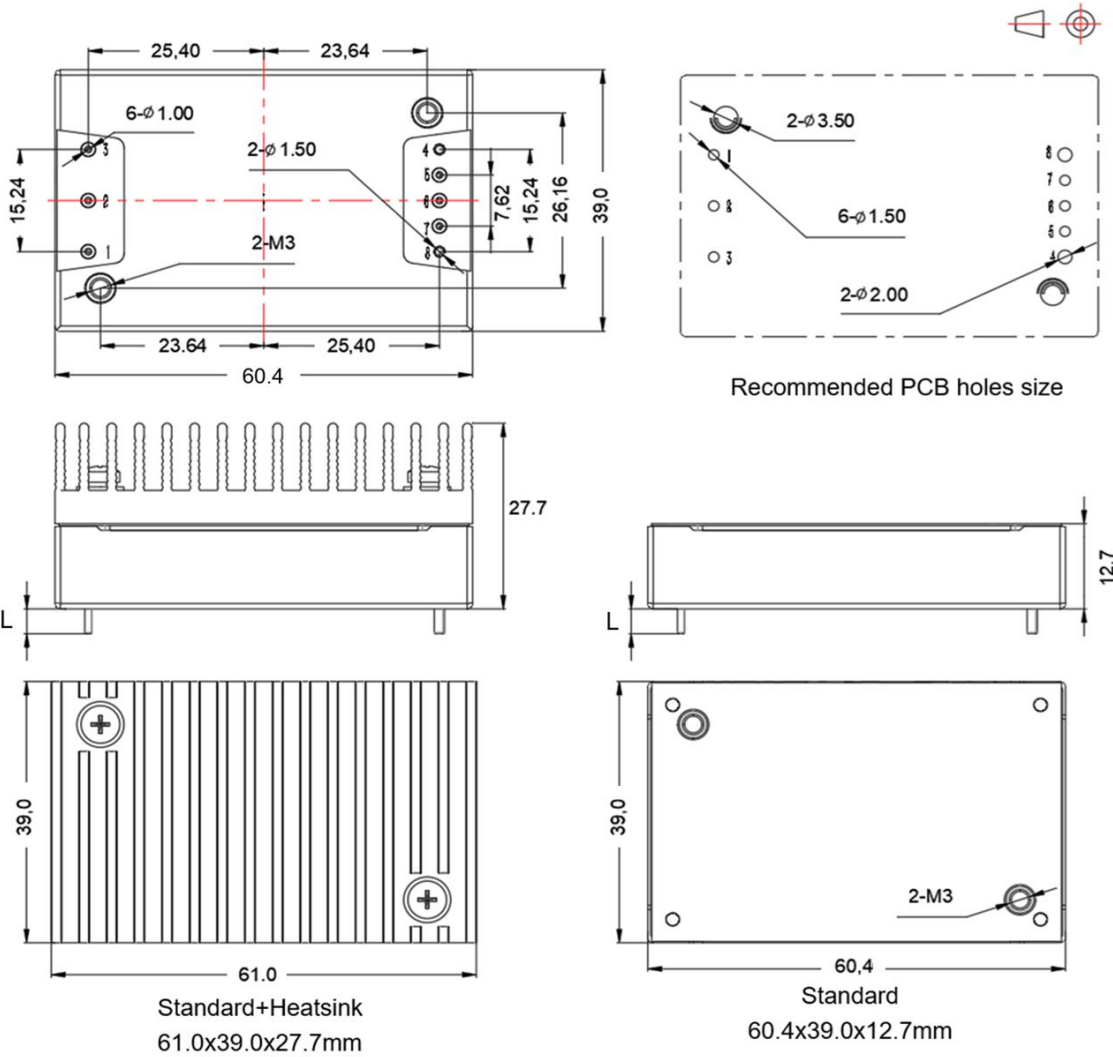
EMC Performances (24VDC & 48VDC input)

EMI	CE	EN55032-3-2	150kHz-500kHz 66dBuV	
		EN55032-2-1	500kHz-30MHz 60dBuV	
	RE	EN55032-3-2	30MHz-230MHz 50dBuV/m at 3m	
		EN55032-2-1	230MHz-1GHz 57dBuV/m at 3m	
EMS	ESD	IEC/EN61000-4-2/GB/T 17626.2-2006	Contact ±6KV/Air ±8KV	Perf. Criteria B
	RS	IEC/EN61000-4-3/GB/T 17626.3-2006	10V/m	Perf. Criteria A
	EFT	IEC/EN61000-4-4/GB/T 17626.4-2008	±2kV 5/50ns 5kHz	Perf. Criteria A
	Surge	IEC/EN61000-4-5/GB/T 17626.5-2008	Line to line ± 2KV	Perf. Criteria B
	CS	IEC/EN61000-4-6/GB/T 17626.6-2008	10 Vr.m.s	Perf. Criteria A

Physical Characteristics

Case materials	Metal base + plastic case in black, flame class UL94-V0
Heat sink	Dimension 61.0x39.0x15.0 mm, weight 52g, aluminum, anodized black
Cooling method	Conduction cooling or forced air cooling with fan
Unit weight	Standard 72g, with heatsink 125g

Mechanical Dimensions and Pin-out Function Description



Standard+Heatsink
61.0x39.0x27.7mm

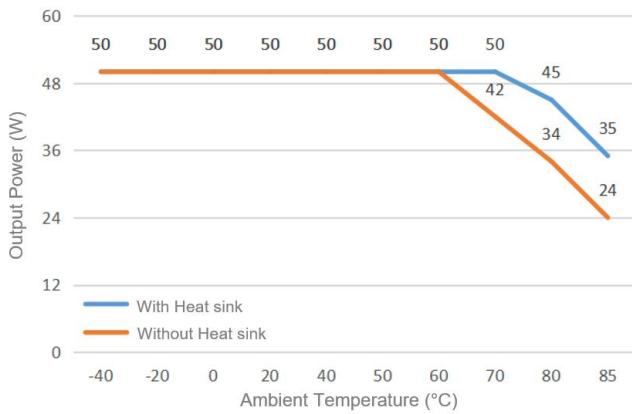
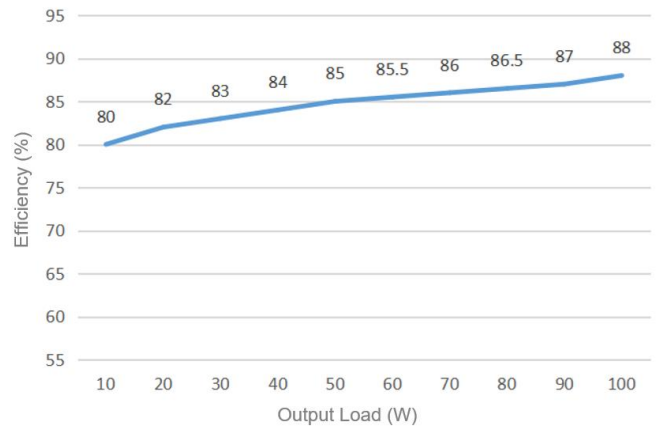
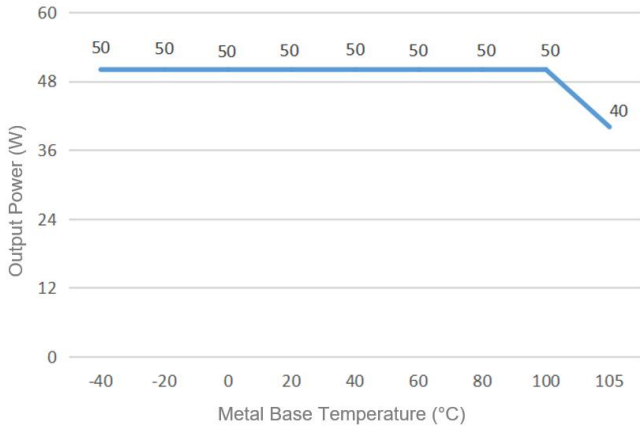
Standard
60.4x39.0x12.7mm

Note:
Unit: mm
Pin 1,2,3,5,6,7 diameter: 1.00
Pin 4,8 diameter: 1.50
Tolerance: X.X ±0.50mm, X.XX ±0.10mm
Screwing torque: 0.4N.m Max

Pin length L=3.7mm

Pin No.	1	2	3	4	5	6	7	8
Function	Vin+	CNT	Vin-	Vout-	-Sense	TRIM	+Sense	Vout+
Description	Input V+	ON/OFF Control	Input V-	Output V-	Output distal end compensation S-	Output Voltage Trim	Output distal end compensation S+	Output V+

Product Characteristics Curves



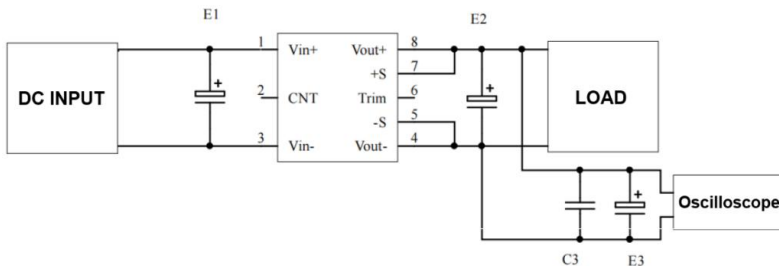
Note:

1. The output power and the efficiency in the graphs have been tested with typical values.
2. The data in temperature derating graph has been tested at Aipu laboratory test conditions. It is recommended to keep the temperature of the Metal base not more than 100 °C when the converter operates at the rated load for the application.

Recommended Circuits for Application

1. Ripple & Noise

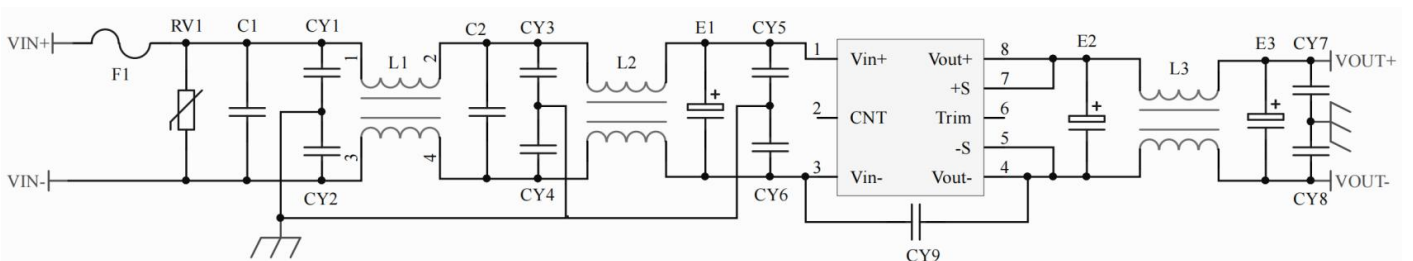
All this series of converters will be tested according to the circuit diagram below before shipping.



Output Volt.	Capacitance			
	E1 (μF)	E2 (μF)	C3 (μF)	E3 (μF)
3.3VDC	100	470	1	10
5VDC				
12VDC				
.....				
48VDC				
.....	68	68		
110VDC				

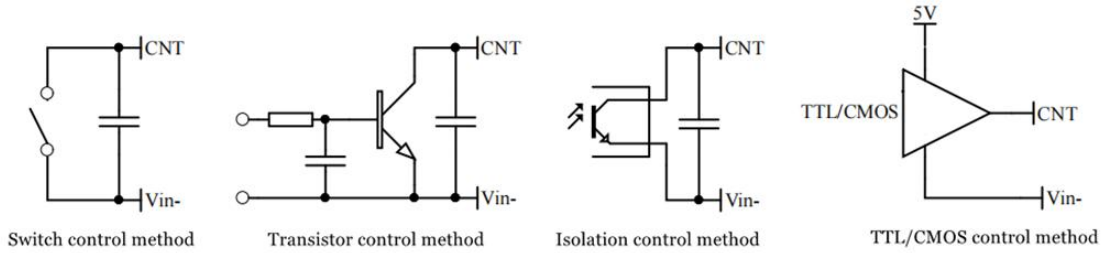
2. Typical application circuit

If this circuit recommended below is not adopted, please connect an electrolytic capacitor $\geq 100 \mu\text{F}$ at the input to suppress the possible surge voltage.



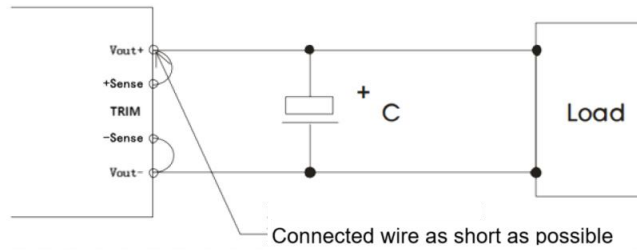
F1	T10A/250V Time-delay fuse
RV1	14D 200V Varistor
C1, C2	105/250V Polyester Film Capacitor
CY1, CY2, CY3, CY4, CY5, CY6	102/250Vac Y2 capacitor
CY7, CY8	103/2KV Ceramic Capacitor
CY9	471/250Vac Y1 capacitor
E1	100μF/200V Electrolytic Capacitor
E2, E3	220μF/35V Electrolytic Capacitor
L1, L2	>3mH, temperature rise less than 25°@5A
L3	>220μH, temperature rise less than 25°@2.1A

3. ON/OFF control (CNT) application



4. Application for Sense

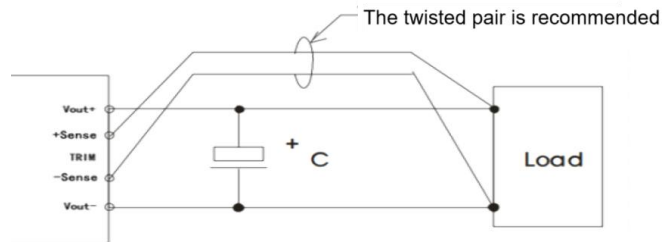
1) With NO distal end compensation



Notes:

1. Short the +Vout to +Sense, -Vout to -Sense if remote sense is not used.
2. Keep sense connections as short as possible and close to the pins to ensure stability.

2) With distal end compensation



Notes:

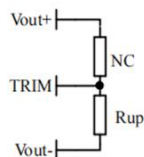
1. The output voltage may be unstable if the compensation cables are too long.
2. The twisted pair or shielded cables are recommended, the cable length should be as short as possible.
3. Wide copper path on PCB or thick lead wires between the power supply and the load should be used to achieve the line voltage drop <0.3V. The target is to keep output voltage within the specified range.
4. The leads wire resistance may create the output voltage oscillation or larger ripples. Please verify it before to use.

5. TRIM & TRIM resistance calculation

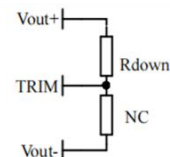
The calculation of ΔU and Rup & Rdown:

$$R_{up} = 70 / \Delta U - 5.1 (K\Omega)$$

$$R_{down} = 28 * (21.5 - \Delta U) / \Delta U - 5.1 (K\Omega)$$



Voltage-up: Add Rup between Trim and Vout-



Voltage-down: Add Rdown between Trim and Vout+

6. This series of converters are not available to be connected in parallel to increase the output power. Please contact Aipu technician for this kind of requirement.

Others

1. The product warranty period is two years. The failed product can be repaired/replaced free of charge if it operates at normal condition. A paid service shall be also provided if the product fails after operating under wrong or unreasonable conditions.
2. Aipupower can provide customization design and filter modules for matching, please contact our technician for details.
3. Revision Date: Feb 27, 2026

Guangzhou Aipu Electron Technology Co., Ltd

Address: Building 4, HEDY Park, No.63, Punan Road, Huangpu Dist, Guangzhou, China.

Tel: 86-20-84206763 Fax: 86-20-84206762 HOTLINE: 400-889-8821

E-mail: sales@aipu-elec.com Website: www.aipupower.com